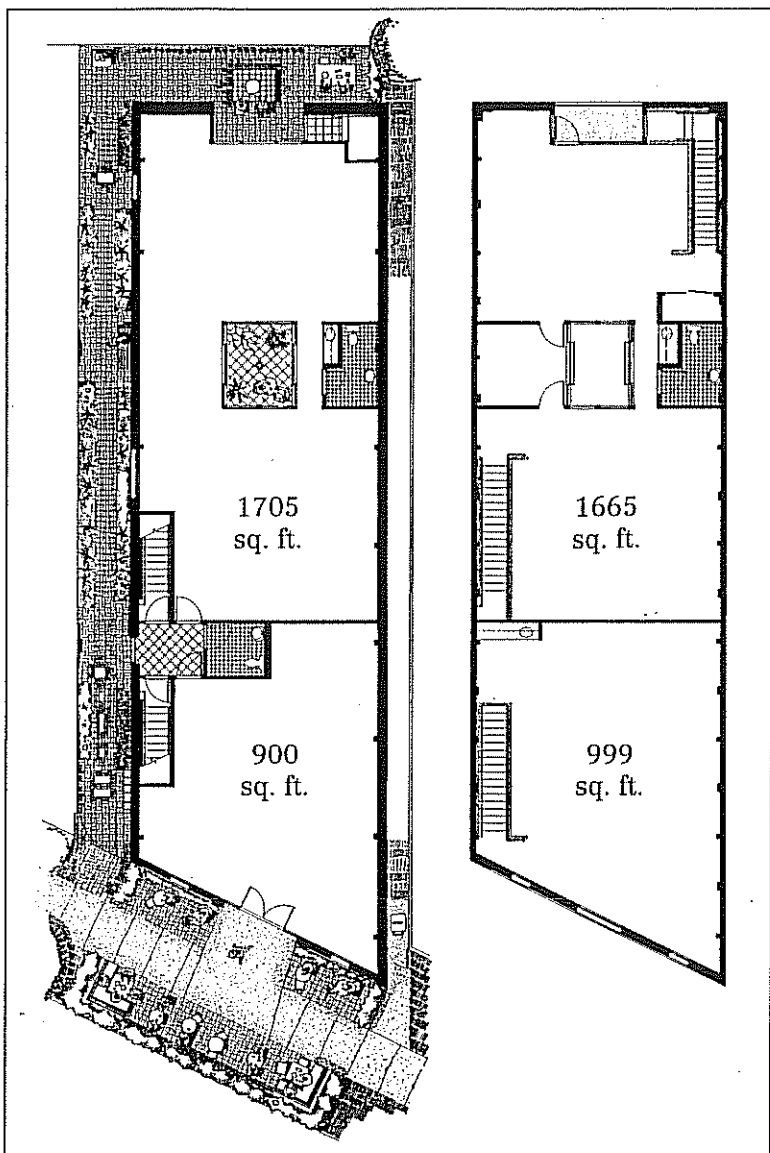


# A unique location for your business



- Maximum natural light is provided by skylights, lightwells, patios and balconies, integrating the interior with the tastefully landscaped exterior areas.

- The building, renovated to meet modern seismic standards, retains the brick charm of its turn-of-the-century origin as a warehouse and stable.

- Masonry walls and large wood-beam framing create interiors that are warm, yet sophisticated.

- Renovation incorporates unique features of the original design, such as columns on the facade, unusually-colored brick walls, and interior masonry frieze blocks.

- Each suite features:
  - separate entrance
  - high ceilings
  - flexible, open floor plan

Conveniently located four blocks from the Ashby BART station and one-half mile from central Berkeley, 2748 Adeline Street is set in a mixed residential and commercial neighborhood, close to restaurants and shopping, yet away from the urban congestion of downtown Berkeley. Unrestricted street parking is available in the immediate area.

